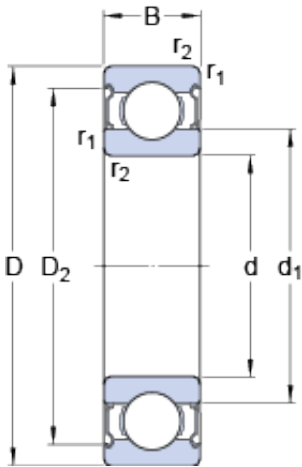




Baochen Machinery Technology Co., Ltd



17 mm x 47 mm x 14 mm SKF E2.6303-2Z deep groove ball bearings

Bearing No. E2.6303-2Z

E2.6303-2Z Bearing 2D drawings and 3D CAD models

Size	47x17x14 mm
Bore Diameter	47 mm
Outer Diameter	17 mm
Width	14 mm
d	17 mm
D	47 mm
B	14 mm
d ₁	26.52 mm
D ₂	39.58 mm
r _{1,2} - min.	1 mm
d _a - min.	22.6 mm
d _a - max.	26.4 mm
D _a - max.	41.4 mm
r _a - max.	1 mm
Basic dynamic load rating - C	13.8 kN
Basic static load rating - C ₀	6.6 kN
Fatigue load limit - P _u	0.275 kN
Reference speed	37000 r/min
Limiting speed	19000 r/min
Calculation factor - k _r	0.03
Calculation factor - f ₀	12