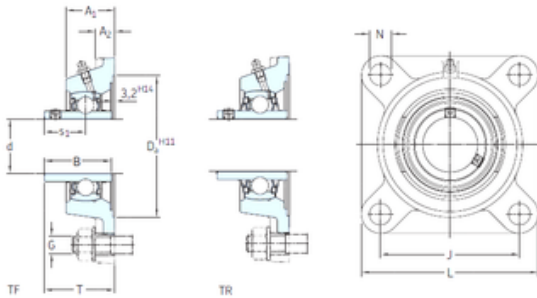




Baochen Machinery Technology Co., Ltd

SKF FY 1.1/8 FM bearing units

Bearing No. FY 1.1/8 FM



FY 1.1/8 FM Bearing 2D drawings and 3D CAD models

Bore Diameter	28,575 mm
d	28,575 mm
s1	26,7 mm
A1	32,5 mm
B1	35,7 mm
G	10 mm
J	82,5 mm
L	108 mm
T	46,7 mm
A2	13 mm
Weight	1,1 Kg
Basic dynamic load rating (C)	19,5 kN
Basic static load rating (C0)	11,2 kN
Fatigue load limit (Pu)	0,475
Category	Flange Block Bearings
Inventory	0.0
Manufacturer Name	SKF
Minimum Buy Quantity	N/A
Weight / Kilogram	1.2
EAN	7316576614385
Product Group	M06110
Number of Mounting Holes	4
Mounting Method	Eccentric Collar
Housing Style	4 Bolt Square Flange Block
Rolling Element	Ball Bearing
Housing Material	Cast Iron



Baochen Machinery Technology Co., Ltd

Expansion / Non-expansion	Non-expansion
Mounting Bolts	7/16 Inch
Relubricatable	Yes
Insert Part Number	YET 206-102
Seals	M Seal
Housing Configuration	1 Piece Solid
Pilot Configuration	No Pilot
Inch - Metric	Inch
Long Description	4 Bolt Square Flange Block; 1-1/8" Bore; 4.7" Bolt Circle; 3-1/4" Bolt Spacing; 1 Piece Solid; Eccentric Collar Mount; Cast Iron; Ball Bearing; 1-13/32" Length Thru Bore; Relubrica
Other Features	Single Row Standard Duty Narrow Inner Race Open End Y Bearing
Category	Flange Block
UNSPSC	31171501
Harmonized Tariff Code	8483.20.40.40
Noun	Bearing
Keyword String	Flanged
Manufacturer URL	http://www.skf.com
Manufacturer Item Number	FY 1.1/8 FM
Weight / LBS	2.65
Bore	1.125 Inch 28.575 Millimeter
Length Thru Bore	1.406 Inch 35.7 Millimeter
Cartridge Pilot Depth	0 Inch 0 Millimeter
Nominal Bolt Circle Diameter Round	4.7 Inch 120 Millimeter
Cartridge Pilot Diameter	0 Inch 0 Millimeter
Bolt Spacing	3.25 Inch 82.55 Millimeter
Housing material	Cast iron



Baochen Machinery Technology Co., Ltd

D_a	93.7 mm
D_{b1}	76 mm
D_{b2}	84 mm
A	32.5 mm
A_1	13 mm
A_3	3.2 mm
A_5	22.5 mm
B_1	35.7 mm
N	11.5 mm
s_1	26.7 mm
R_G	1/4-28 UNF
R_1	21 mm
D_N	6.5 mm
SW_N	7 mm
G_N	1/4-28 SAE-LT
J_6	96 mm
J_7	24.5 mm
N_4	4 mm
Basic dynamic load rating C	19.5 kN
Basic static load rating C_0	11.2 kN
Fatigue load limit P_u	0.475 kN
Limiting speed	6300 r/min
Mass bearing unit	1.05 kg
Thread grub screw G_2	5/16-24 UNF
Hexagonal key size for grub screw N	3.969 mm
Recommended tightening torque for grub screw	6.5 N · m
Recommended diameter for attachment bolts, mm G	10 mm
Recommended diameter for attachment bolts, inch G	0.375 in